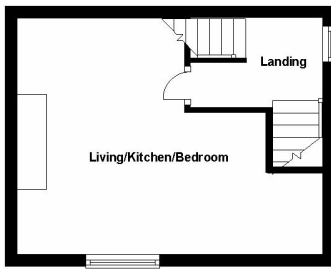
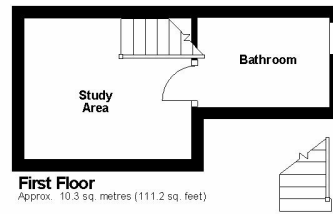


## 28 Low Banks Floor Plan

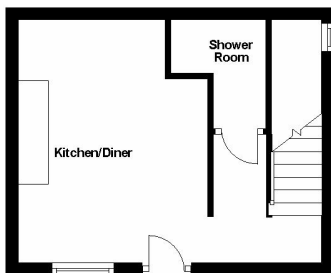


**Ground Floor**  
Approx. 20.6 sq. metres (222.2 sq. feet)

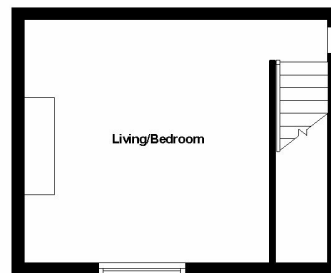


**First Floor**  
Approx. 10.3 sq. metres (111.2 sq. feet)

## 32 Low Banks Floor Plan



**Ground Floor**  
Approx. 19.7 sq. metres (212.3 sq. feet)



**First Floor**  
Approx. 20.3 sq. metres (218.0 sq. feet)