



Residential Development Site Gisburn Street Barnoldswick BB18 5ER

An exciting opportunity to acquire a site with full planning permission for the construction of seven houses in total. The scheme comprises a terrace of four which has already been built and is progressing beyond first fix stage and a separate terrace of three slightly larger houses yet to be started.

This excellent development opportunity enjoys a convenient central location within the popular village of Barnoldswick just 6 miles from Colne and access to the M65 motorway.

Guide Price £625,000

Residential Development Site Gisburn Street Barnoldswick BB18 5ER

• Colne (M65) 6 miles • Skipton 9 miles • Clitheroe 13 miles • Blackburn 21 miles • Bradford 26 miles

Location

The site is situated in a popular residential area of Barnoldswick within walking distance of the towns busy centre which offers a good range of services including bars, eateries, shops, an Aldi supermarket and primary and secondary schools. Access by road is very convenient with the M65 motorway at nearby Colne opening up the larger centres of Lancashire.

Description

The site comprises a range of former workshop buildings benefitting from full planning permission for demolition and clearance to be replaced with a total of seven new build three bedroom dwellings in two terraces, with each property having private parking and outside space.

Following discharge of conditions, part of the site has been cleared and a terrace of four three bedroom houses constructed to a high standard. The complete terrace is weather tight including windows installed with internal works progressing from first fix.

The buildings on the remainder of the site provide useful workshop/storage space which under the approved scheme are to be demolished and replaced by a further terrace of three slightly larger three bedroom houses.

All work carried out to date has been done so to a high standard and is fully compliant with building regulations.

The scheme which was prepared by the planning and development team at David Hill LLP was approved by Pendle Borough Council under Application Reference: 18/0897/FUL on the 27 February 2029.

Planning conditions were subsequently discharged by Pendle Borough Council under Application Reference: 21/0700/CND on the 02 February 2022.

The approved scheme is for the construction of two

terraces of three bedroom houses, each with private parking and outside space.

The terrace that has been partially constructed is of four houses which are identical in size and layout and provide the following accommodation over three floors:

Ground Floor

Entrance Hall, Living Room, Kitchen/Dining, Rear Hall, W.C.

First Floor

Landing, Bedroom 2, Bedroom 3, Bathroom.

Second Floor

Landing, Bedroom 1 (restricted headroom towards eaves), Under Eaves Store.

Total approximate gross internal floor area (excluding restricted headroom) 87 m² (936 ft²) each.

The second terrace which is yet to be constructed is of three slightly larger houses which are identical in size and layout providing the following accommodation over three floors:

Ground Floor

Entrance Hall, Living Room, Kitchen/Dining, Rear Hall, W.C.

First Floor

Landing, Bathroom, Bedroom 2, Bedroom 3.

Second Floor

Landing, Bedroom 1 (restricted headroom towards eaves), En Suite, Store.

Total approximate gross internal floor area (excluding restricted headroom) 117 m² (1259 ft²) each.



Terrace of four

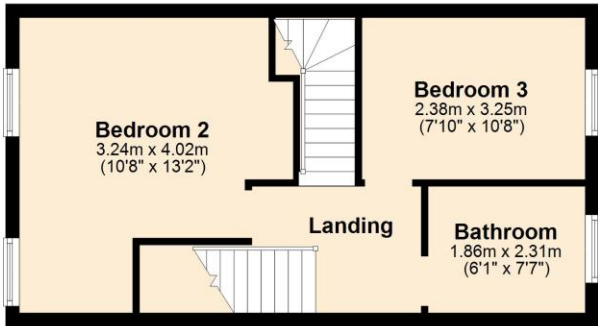
Ground Floor

Approx. 35.0 sq. metres (377.2 sq. feet)



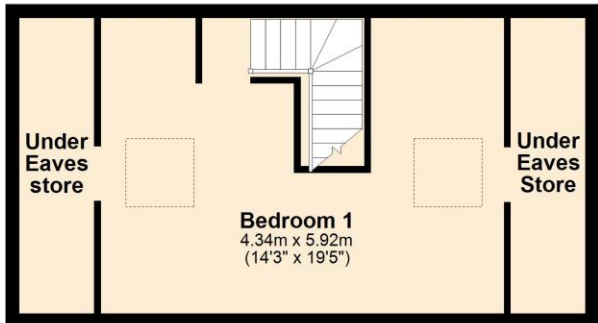
First Floor

Approx. 36.0 sq. metres (387.4 sq. feet)



Second Floor

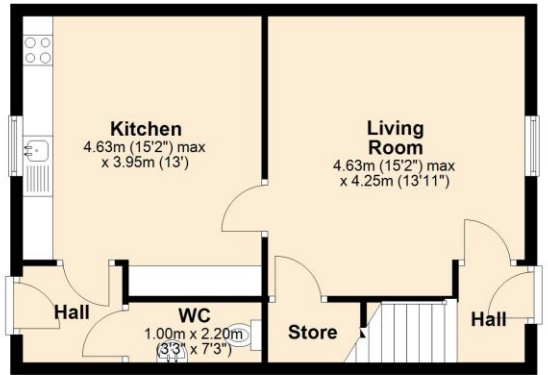
Approx. 34.6 sq. metres (372.1 sq. feet)



Terrace of three

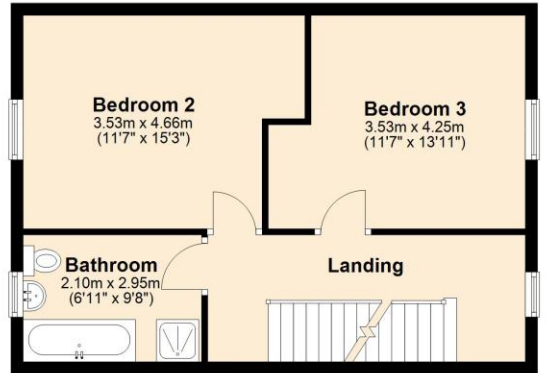
Ground Floor

Approx. 47.6 sq. metres (511.9 sq. feet)



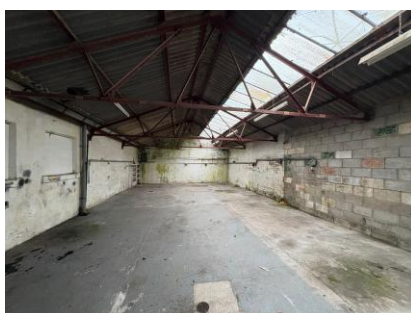
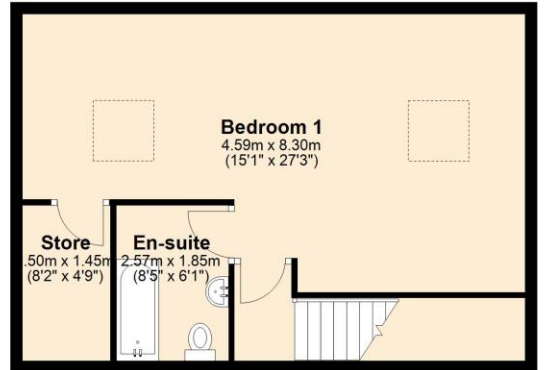
First Floor

Approx. 47.6 sq. metres (511.9 sq. feet)



Second Floor

Approx. 47.5 sq. metres (510.8 sq. feet)





Services

We understand the original buildings to be connected to mains water, mains drainage and mains electricity. The four new dwellings are yet to be individually connected to mains services. Surface water attenuation for the development is yet to be installed.

Viewing

By appointment with the agents.

Tenure

Freehold. Vacant possession on completion.

Wayleaves, Easements and Rights of Way

The land is sold subject to all wayleaves, easements and rights of way both public and private which might affect the land.

Directions

From Skipton head west on the A59 taking the first exit at the Broughton roundabout onto the A56. Continue to Thornton-in-Craven turning right onto Church Road (B6252) signed to Barnoldswick. Continue on Church Road which becomes Skipton Road for about 2 miles before turning right into West Close Road. At the end of West Close Road turn left onto Gisburn Street where the development can be found on the left. A for sale sign has been erected.

The New Ship, Mill Bridge, Skipton, BD23 1NJ

info@david-hill.co.uk

These particulars have been prepared as accurately and reliably as possible, but should not be relied upon as 'statement of fact'. If there is any point which is of particular importance to you, please contact the David Hill office and we would be pleased to check the information. Please do so particularly if contemplating traveling some distance to view the property. We have not tested any services or appliances and nothing in these particulars should be deemed a statement that they are in good working order or that the property is in good structural condition or otherwise. Areas, measurements, plans or distances are given as a guide only. Purchasers must satisfy themselves by inspection or otherwise regarding the items mentioned above and as to the correctness of each of the statements contained in these particulars. No employee or partner of David Hill has authority to make or give any representation or warranty in relation to the property, nor enter into any contract relating to the property on behalf of the vendor.

